

JOINT PUBLIC NOTICE

September 6, 2016

United States Army
Corps of Engineers
New Orleans District
Regulatory Branch
Post Office Box 60267
New Orleans, Louisiana 70160-0267

State of Louisiana
Department of Environmental Quality
Water Quality Certifications Section
Post Office Box 4313
Baton Rouge, Louisiana 70821-4313

(504) 862-1217
Project Manager
Kenny Blanke
Kenneth.G.Blanke@usace.army.mil
MVN 1997-0428-CQ

(225) 219-3225
Project Manager
Ms. Elizabeth Hill
WQC Application Number
WQC 150708-01

Interested parties are hereby notified that a permit application has been received by the New Orleans District of the U.S. Army Corps of Engineers pursuant to: [X] Section 10 of the Rivers and Harbors Act of March 3, 1899 (30 Stat. 1151; 33 USC 403); and/or [X] Section 404 of the Clean Water Act (86 Stat. 816; 33 USC 1344).

Application has also been made to the Louisiana Department of Environmental Quality, Office of Environmental Services, for a Water Quality Certification (WQC) in accordance with statutory authority contained in LRS30:2074 A(3), and provisions of Section 401 of the Clean Water Act (P.L.95-17).

MODIFICATION TO EXISTING GIWW TO CLOVELLY HYDROLOGIC RESTORATION PROJECT (CWPPRA PROJECT BA-02) IN BAY L'OURS IN LAFOURCHE PARISH

NAME OF APPLICANT: Coastal Protection and Restoration Authority of Louisiana (CPRA), c/o Stanley Consultants, Inc., Attn: James Smith, 721 Government Street, Suite 302, Baton Rouge, Louisiana 70802.

LOCATION OF WORK: Located south of Clovelly Canal, bounded by Little Lake, Breton Canal and Superior Canal, approximately 5 miles southeast of Cut Off, Louisiana in LAFOURCHE Parish on, as shown on the enclosed drawings (Latitude 29.5104 N Longitude -90.232767 W). This project is located in Deltaic Basin (East Central Louisiana Coastal HUC 08090301).

CHARACTER OF WORK: The construction of a conventional rock dike and installation and maintenance of marine mattresses to close an opening in the shoreline protection system along Bay L'Ours between Structures 2 and 4. The project is being proposed to protect the exposed marsh area along the shoreline of Bay L'Ours and close an opening in the previously built shoreline protection system. Approximately 6,035 cubic yards of unvegetated waterbottoms would be dredged and placed as temporary spoil. Approximately 1.48 acres of marsh may be temporarily impacted as a result of mat placement which would be removed once rock dike construction is complete. The applicant has claimed that the project has been designed to avoid and minimize direct and secondary adverse wetland impacts to the maximum extent practicable and is proposing to utilize the existing levee to the maximum extent practicable. Based on our preliminary review, compensatory mitigation is not required. The project has been designed to have a net benefit of approximately 175 acres after 20 years.

The comment period for the Department of Army Permit and the Louisiana Department of Environmental Quality will close in **20 days** from the date of this joint public notice. Written comments, including suggestions for modifications or objections to the proposed work, stating reasons thereof, are being solicited from anyone having interest in this permit and/or this WQC request and must be mailed so as to be received before or by the last day of the comment period. Letters concerning the Corps of Engineers permit application must reference the applicant's name and the Permit Application Number, and be mailed to the Corps of Engineers at the address above, **ATTENTION: REGULATORY BRANCH**. Similar letters concerning the Water Quality Certification must reference the applicant's name and the WQC application number and be mailed to the Louisiana Department of Environmental Quality at the address above. Individuals or parties may request an extension of time in which to comment on the proposed work by writing or e-mailing the Corps of Engineers Project Manager listed above. Any request must be specific and substantively supportive of the requested extension, and received by this office prior to the end of the initial comment period. The Section Chief will review the request and the requestor will be promptly notified of the decision to grant or deny the request. If granted, the time extension will be continuous to the initial comment period and, inclusive of the initial comment period, will not exceed a total of 30 calendar days.

The application for this proposed project is on file with the Louisiana Department of Environmental Quality and may be examined during weekdays between 8:00 a.m. and 4:30 p.m. Copies may be obtained upon payment of costs of reproduction.

Corps of Engineers Permit Criteria

The decision whether to issue a permit will be based on an evaluation of the probable impacts, including cumulative impacts of the proposed activity on the public interest. That decision will reflect the national concern for both protection and utilization of important resources. The benefit which reasonably may be expected to accrue from the proposal must be balanced against its reasonably foreseeable detriments. All factors which may be relevant to the proposal will be considered including the cumulative effects thereof; among those are conservation, economics, aesthetics, general environmental concerns, wetlands, historic properties, fish and wildlife values, flood hazards, floodplain values, land use, navigation, shoreline erosion and accretion, recreation, water supply and conservation, water quality, energy needs, safety, food and fiber production, mineral needs, considerations of property ownership and, in general, the needs and welfare of the people.

The U.S. Army Corps of Engineers is soliciting comments from the public, federal, state, and local agencies and officials, Indian Tribes, and other interested parties in order to consider and evaluate the impacts of this proposed activity. Any comments received will be considered by the U.S. Army Corps of Engineers to determine whether to make, modify, condition, or deny a permit for this proposal. To make this decision, comments are used to assess impacts on endangered species, historic properties, water quality, general environmental effects, and other public interest factors listed above. Comments are used in the preparation of an Environmental Assessment and/or an Environmental Impact Statement pursuant to the National Environmental Policy Act. Comments are also used to determine the need for a public hearing and to determine the overall public interest of the proposed activity.

The New Orleans District is unaware of properties listed on the National Register of Historic Places near the proposed work. The possibility exists that the proposed work may damage or destroy presently unknown archeological, scientific, prehistorical, historical sites, or data. Copies of this notice are being sent to the State Archeologist and State Historic Preservation Officer.

Our initial finding is that the proposed work would not affect any species, nor affect any habitat designated as critical to the survival and recovery of such species, listed as endangered by the U.S. Department of Commerce.

The proposed activity is located in areas known to be utilized by the West Indian manatee (*Trichechus manatus*). Utilizing Standard Local Operating Procedure for Endangered Species in Louisiana (SLOPES), dated October 22, 2014, between the U.S. Army Corps of Engineers, New Orleans and U.S. Fish and Wildlife Service, Ecological Services Office, the Corps has determined that the proposed activity is not likely to adversely affect this species.

This notice initiates the Essential Fish Habitat (EFH) consultation requirements of the Magnuson-Stevens Fishery Conservation and Management Act. The applicant's proposal would result in the destruction or alteration of 4.0 acres of EFH utilized by various life stages of red drum and penaeid shrimp. Our initial determination is that the proposed action would not have a substantial adverse impact on EFH or federally managed fisheries in the Gulf of Mexico. Our final determination relative to project impacts and the need for mitigation measures is subject to review by and coordination with the National Marine Fisheries Service.

If the proposed work involves deposits of dredged or fill material into navigable waters, the evaluation of the probable impacts will include the application of guidelines established by the Administrator of the Environmental Protection Agency. Also, a certification that the proposed activity will not violate applicable water quality standards will be required from the Department of Environmental Quality, Office of Environmental Services, before a permit is issued.

Any person may request, in writing, within the comment period specified in this notice, that a public hearing be held to consider this application. Requests for public hearings shall state, with particularity, the reasons for holding a public hearing. You are requested to communicate the information contained in this notice to any other parties whom you deem likely to have interest in the matter.

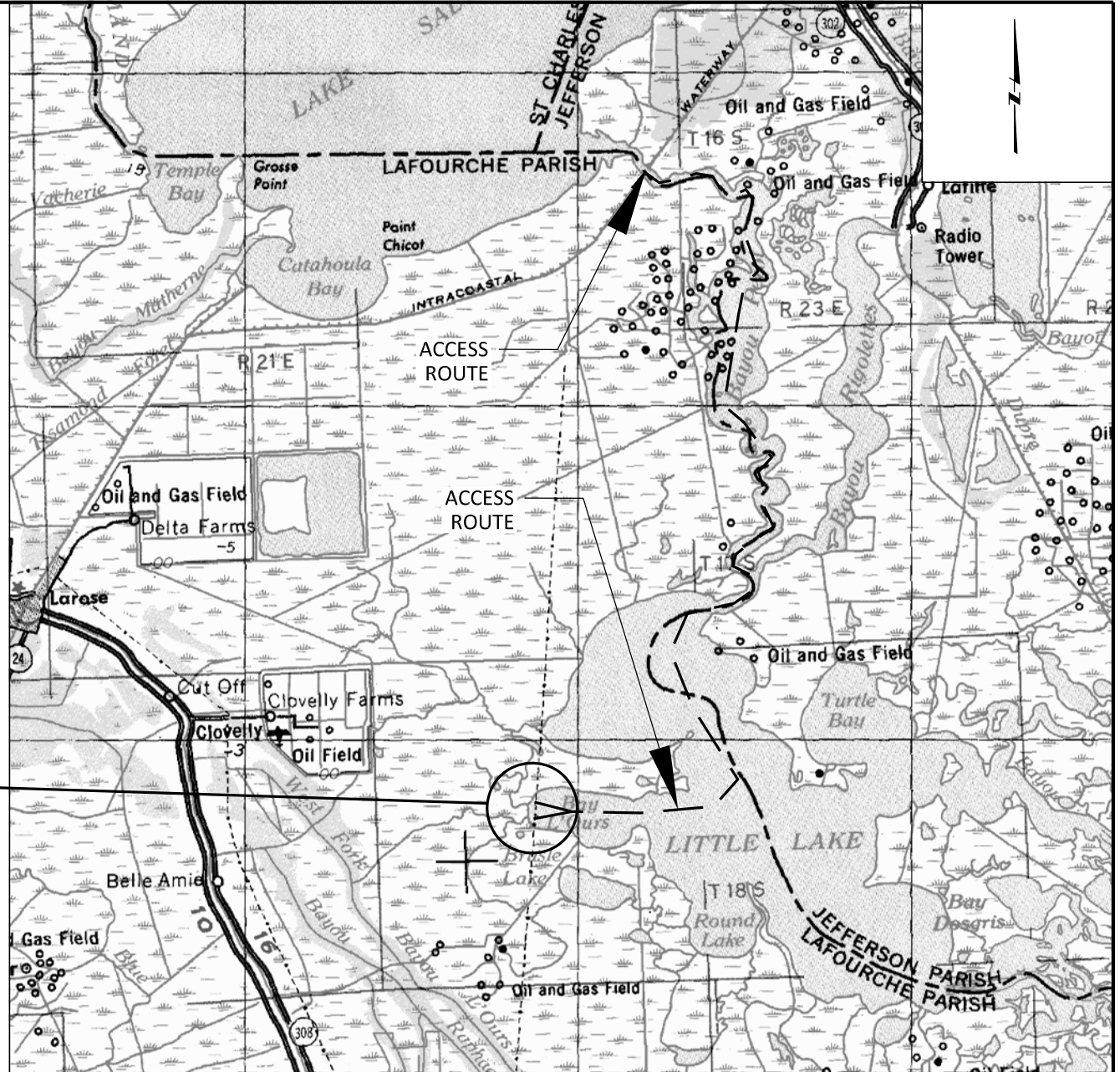
The applicant has certified that the proposed activity described in the application complies with and will be conducted in a manner that is consistent with the Louisiana Coastal Resources Program. The Department of the Army permit will not be issued unless the applicant received approval or a waiver of the Coastal Use Permit by the Department of Natural Resources.

JOHN M. HERMAN
Chief, Central Evaluation Section
Regulatory Branch

Enclosure

Sheet No.	Sheet Contents
1	Index
2	Layout Plan
3	Plan View A
4	Plan View B
5	Plan View C
6	Plan View D
7	Plan View E
8	Typical Section A
9	Typical Section B
10	Volumes and Quantities
11	Warning Sign Details

PROJECT LOCATION



NOTES:

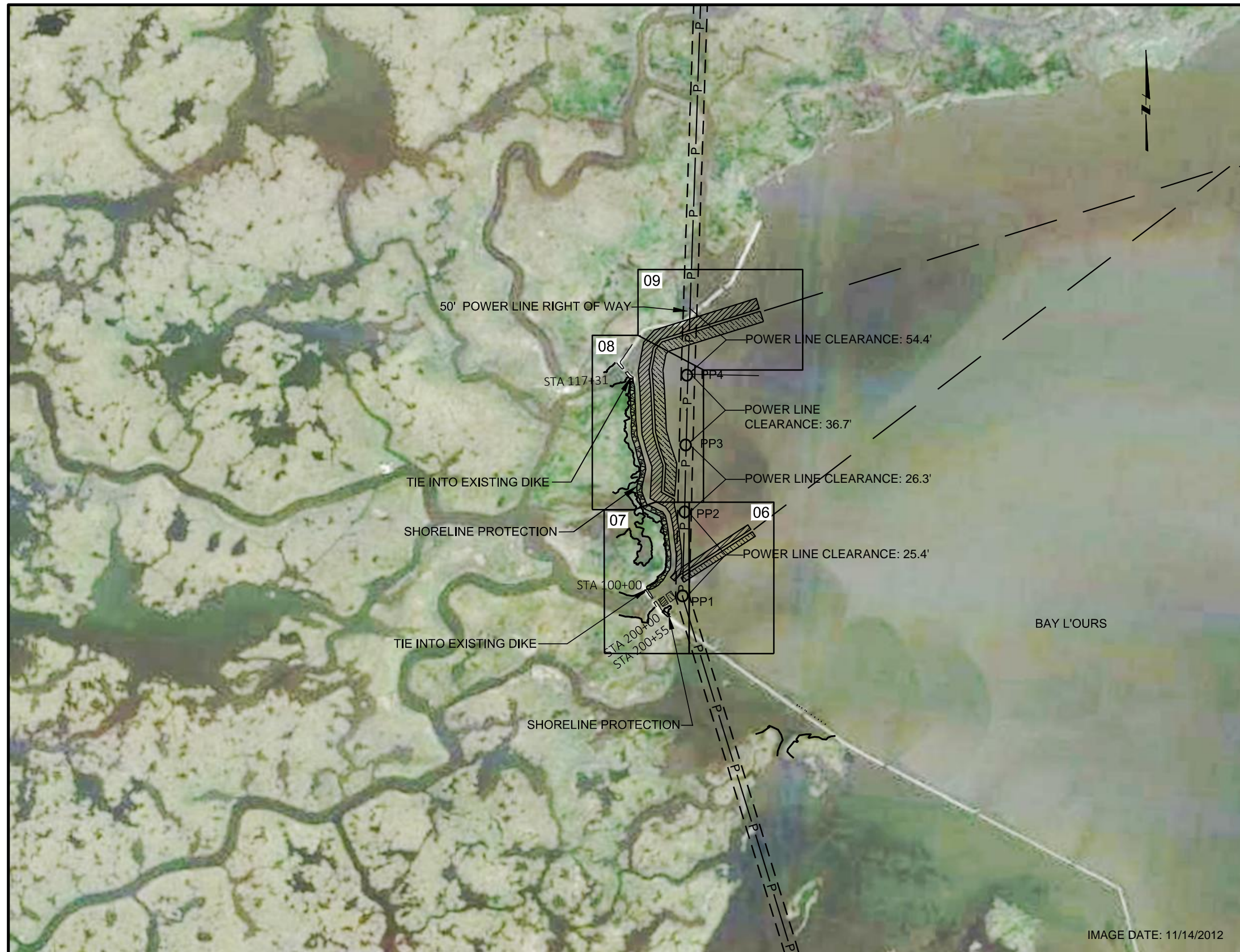
COASTAL PROTECTION AND RESTORATION AUTHORITY
 BA-02
 GIWW TO CLOVELLY HYDROLOGIC RESTORATION
 2014 MAINTENANCE PROJECT

INDEX



Stanley Consultants inc.
 225 Iowa Avenue, Muscatine, Iowa 52761-3764
 www.stanleyconsultants.com

SCALE: NTS
 DATE: 5/05/2015
 SHEET 1 OF 11



LEGEND	
	PROPOSED SHORELINE PROTECTION
	PROPOSED EXCAVATION AREA
	TEMPORARY SPOIL LOCATION
	EXISTING MARSH EDGE
	POWER LINES
	SURVEYED POWER POLES
	20 FT VERTICAL AND HORIZONTAL CLEARANCE
	50 FT ENTERGY POWER LINE RIGHT OF WAY
	POTENTIAL ACCESS ROUTE (CONTRACTOR TO DETERMINE)

Utility Disposition				
Item	Description	Northing	Easting	Disposition
PP 1	Wooden Poles (triple)	369083.35'	3631165.86'	Do Not Disturb
PP 2	Metal Pole	369703.60'	3631177.08'	Do Not Disturb
PP 3	Metal Pole	370198.75'	3631188.40'	Do Not Disturb
PP 4	Wooden Poles (double)	3631193.48'	370714.44'	Do Not Disturb

- NOTES:
- ACCESS ROUTES ARE SHOWN FOR INFORMATIONAL PURPOSES ONLY. ACCESS CHANNELS, OTHER THAN THOSE SHOWN ON THE PLANS MAY BE REQUIRED TO REACH LAKE RIM TO CONSTRUCT PROPOSED SHORELINE PROTECTION. IT IS THE CONTRACTOR'S RESPONSIBILITY TO DETERMINE ACCESS CHANNEL REQUIREMENTS PRIOR TO SUBMITTING BID AND INCLUDE IN BID PRICE.
 - PRIOR TO FLOATING EQUIPMENT BENEATH ELECTRICAL TRANSMISSION LINES, THE CONTRACTOR SHALL COORDINATE THE DE-ENERGIZING OF POWER LINES. FOR POWER LINES ADJACENT TO LIMITS OF WORK, CONTACT ENTERGY:
 JIMMY SHOLAR
 CELL: 504-615-5540
 EMAIL: JSHOLAR@ENTERGY.COM
 SEE NOTE 5 ON SHEET 2 AND SPECIFICATIONS FOR ADDITIONAL INFORMATION ON DE-ENERGIZING..
 - SEE NOTE 4, 6 AND 7 ON SHEET 2.

SCALE: 1"= 800' (11" X 17")

IMAGE DATE: 11/14/2012

REV.	DATE	DESCRIPTION	BY

Stanley Consultants Inc.
 225 Iowa Avenue, Muscatine, Iowa 52761-3764
 www.stanleyconsultants.com

COASTAL PROTECTION AND RESTORATION AUTHORITY
 OPERATIONS DIVISION

450 LAUREL STREET, SUITE 1200
 BATON ROUGE, LOUISIANA 70801

DRAWN BY: SRH

DESIGNED BY: SRH

GIWW TO CLOVELLY HYDROLOGIC RESTORATION
 2015 MAINTENANCE PROJECT

STATE PROJECT NUMBER: BA-02

FEDERAL PROJECT NUMBER: BA-02

APPROVED BY: JRS

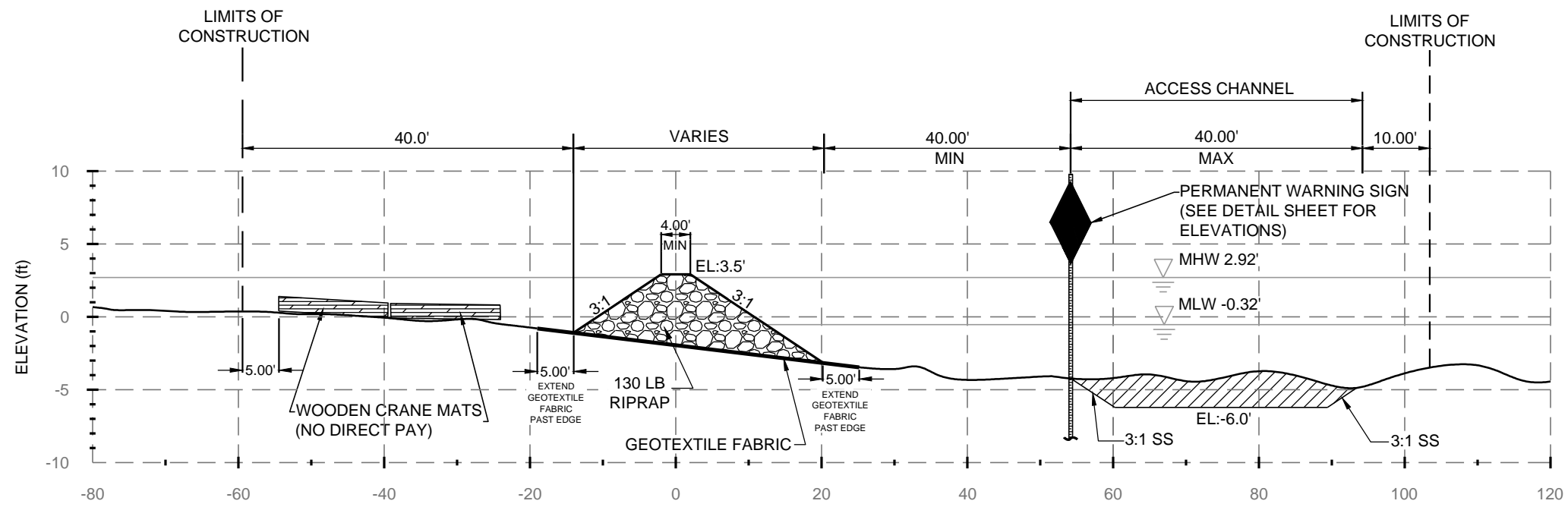
SITE PLAN

DATE: JUNE 2015

SHEET 3 OF 16

LEGEND	
	WOODEN MATS
	PROPOSED ROCK DIKE
	PROPOSED ACCESS CHANNEL
	TEMPORARY SPOIL LOCATION
	WARNING SIGN
	EXISTING PROFILE
	GEOTEXTILE FABRIC
	MEAN HIGH/LOW WATER LEVEL

**TYPICAL SECTION
ROCK DIKE:
STA 100+00 TO 105+80**



OFFSET (ft)
HORIZONTAL SCALE: 1"=20'
VERTICAL SCALE: 1"=10'
(11"X 17")

SECTION VIEW

REV.	DATE	DESCRIPTION	BY

Stanley Consultants Inc.
 225 Iowa Avenue, Muscatine, Iowa 52761-3764
 www.stanleyconsultants.com

COASTAL PROTECTION AND RESTORATION AUTHORITY
OPERATIONS DIVISION

450 LAUREL STREET, SUITE 1200
BATON ROUGE, LOUISIANA 70801

DRAWN BY: SRH

DESIGNED BY: SRH

GIWW TO CLOVELLY HYDROLOGIC RESTORATION
2015 MAINTENANCE PROJECT

STATE PROJECT NUMBER: BA-02

FEDERAL PROJECT NUMBER: BA-02

APPROVED BY: JRS

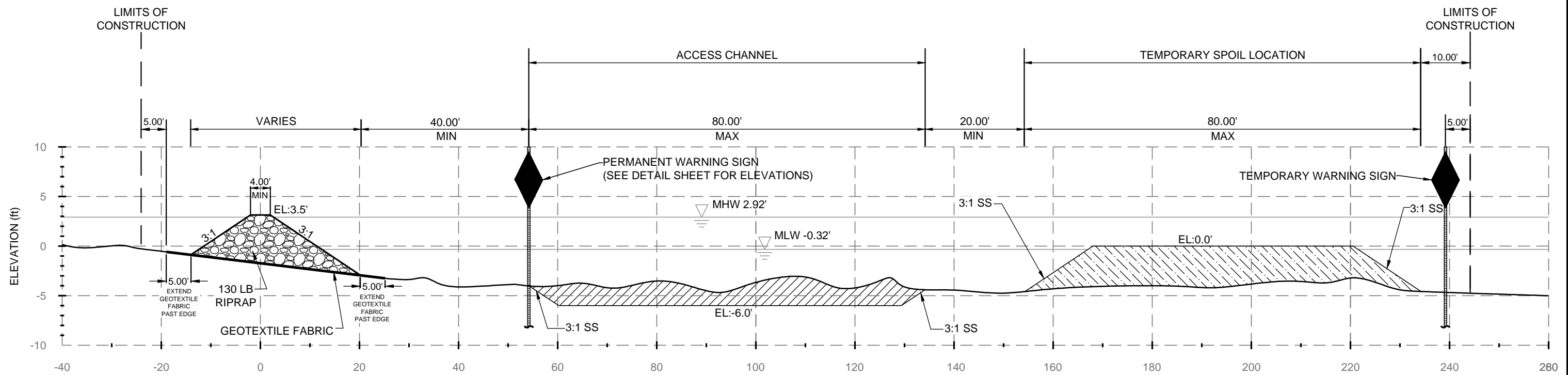
TYPICAL SECTION
ROCK DIKE:
STA 100+00 TO 106+01 AND
STA 200+00 TO 200+55

DATE: JUNE 2015

SHEET 4 OF 16

LEGEND	
	WOODEN MATS
	PROPOSED ROCK DIKE
	PROPOSED ACCESS CHANNEL
	TEMPORARY SPOIL LOCATION
	WARNING SIGN
	EXISTING PROFILE
	GEOTEXTILE FABRIC
	MEAN HIGH/LOW WATER LEVEL

TYPICAL SECTION ROCK DIKE: STA 106+01 TO 117+31



OFFSET (ft)
HORIZONTAL SCALE: 1"=20'
VERTICAL SCALE: 1"=10'
(11"X 17")
SECTION VIEW

NOTES:

- CONTRACTOR SHALL INSTALL PERMANENT WARNING SIGNS ADJACENT TO SHORE UPON ROCK DIKE'S COMPLETION. THE SIGNS SHOULD BE INSTALLED 40 FEET FROM THE TOE OF THE ROCK DIKE ALONG 200 FOOT INTERVALS. THE TEMPORARY WARNING SIGNS MAY BE REUSED FOR THIS PURPOSE IF FOUND TO BE IN ACCEPTABLE ORDER BY THE OWNER.

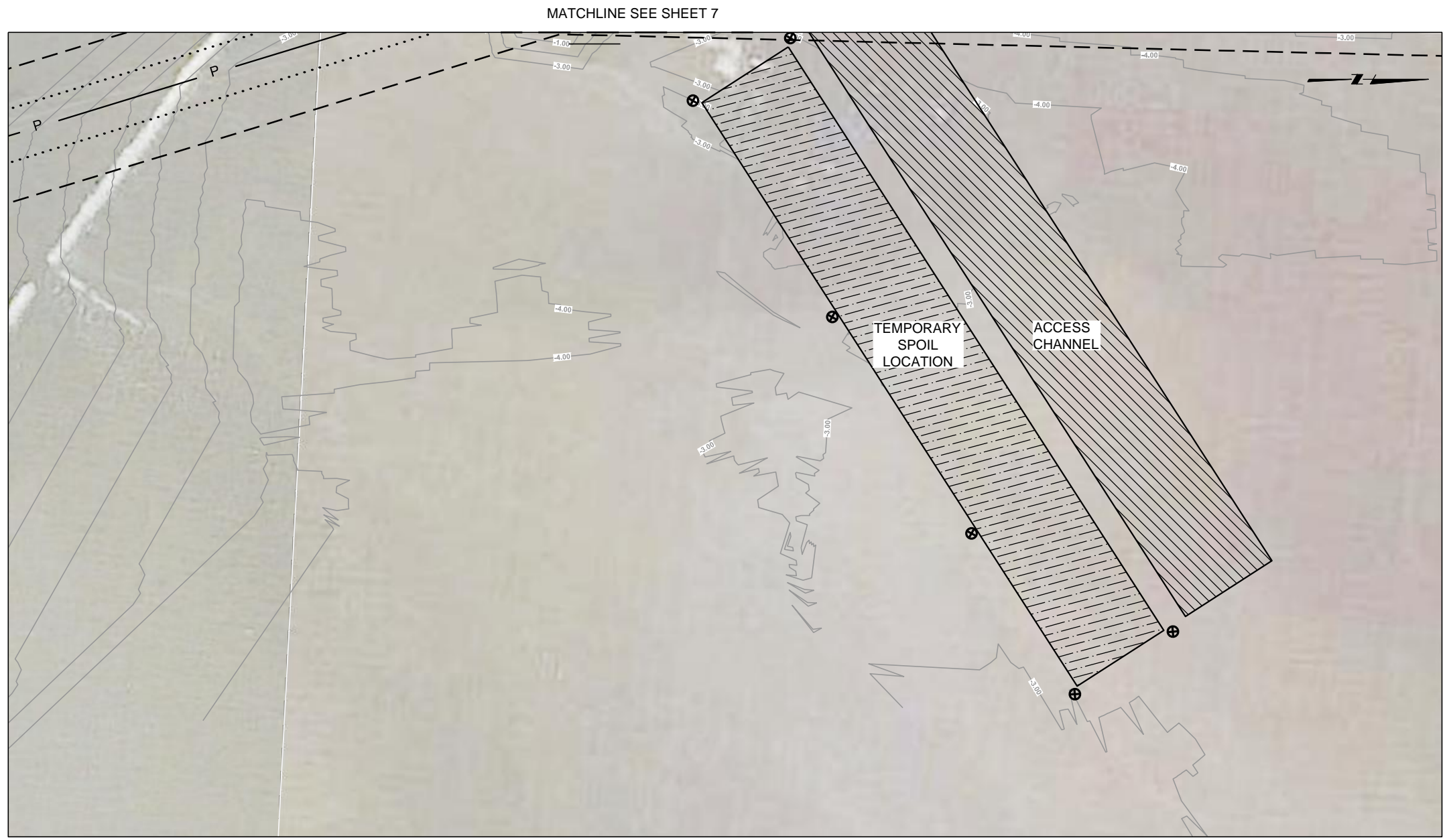
REV.	DATE	DESCRIPTION	BY

Stanley Consultants Inc.
 225 Iowa Avenue, Muscatine, Iowa 52761-3764
 www.stanleyconsultants.com

COASTAL PROTECTION AND RESTORATION AUTHORITY
OPERATIONS DIVISION
 450 LAUREL STREET, SUITE 1200
 BATON ROUGE, LOUISIANA 70801
 DRAWN BY: SRH DESIGNED BY: SRH

GIWW TO CLOVELLY HYDROLOGIC RESTORATION
 2015 MAINTENANCE PROJECT
 STATE PROJECT NUMBER: BA-02
 FEDERAL PROJECT NUMBER: BA-02
 APPROVED BY: JRS

TYPICAL SECTION
 ROCK DIKE:
 STA 106+01 TO 117+31
 DATE: JUNE 2015
 SHEET 5 OF 16

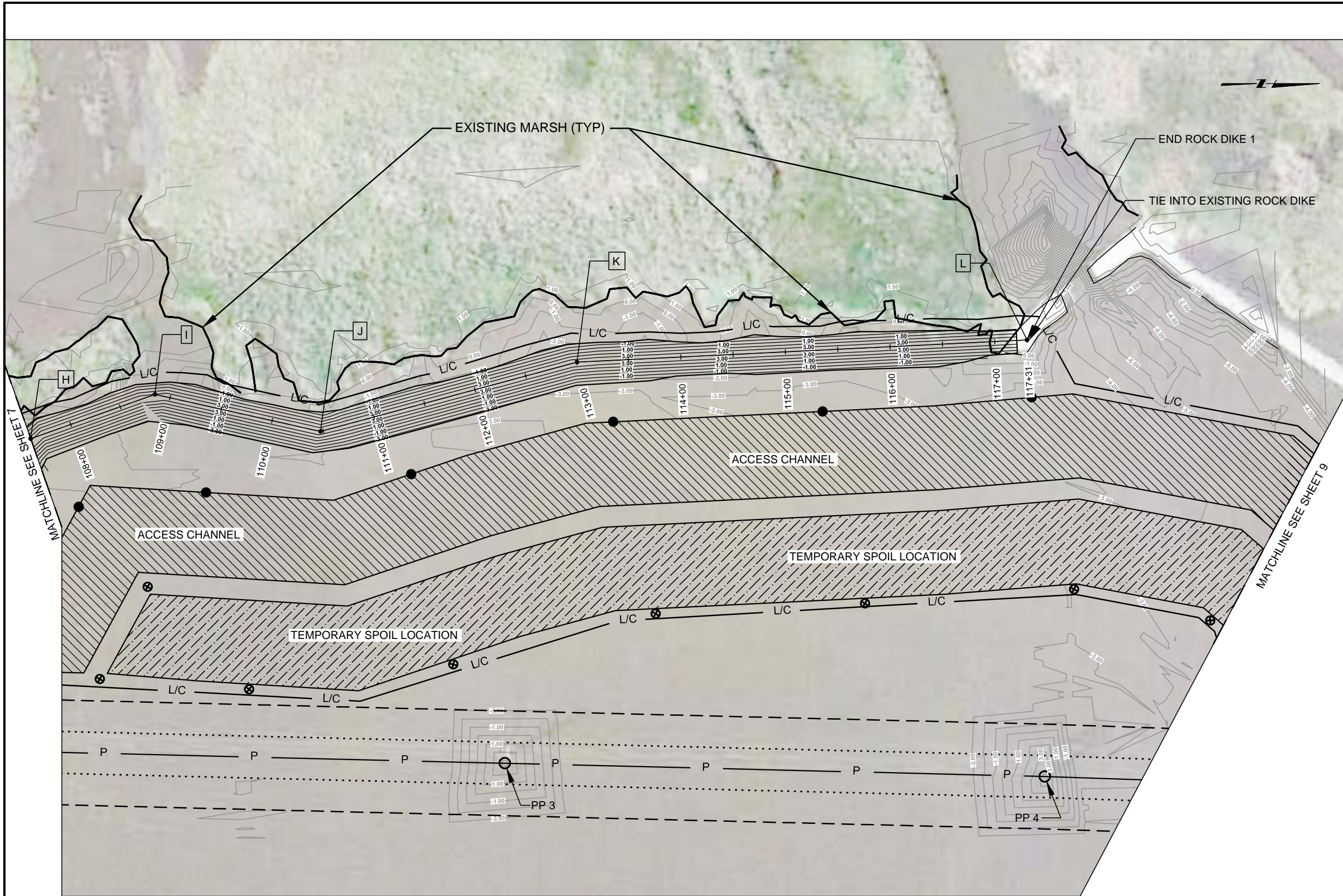


LEGEND	
	EXISTING MARSH BANK
	EXISTING SURFACE CONTOURS
	ROCK DIKE CONTOURS
	ROCK DIKE ALIGNMENT
	SECTION LINES
	POWER LINES
	SURVEYED POWER POLE
	20 FT VERTICAL AND HORIZONTAL CLEARANCE
	50 FT ENERGY POWER LINE RIGHT OF WAY
	LIMITS OF CONSTRUCTION
	PERMANENT WARNING SIGNS
	TEMPORARY WARNING SIGNS
	PROPOSED ACCESS CHANNEL
	TEMPORARY SPOIL LOCATION
	WOODEN CRANE MATS (NO DIRECT PAY)

ACCESS DREDGE A
SCALE: 1"= 100' (11"X 17")

- NOTES:**
1. THE END COORDINATES OF THE PROPOSED ROCK DIKES ARE APPROXIMATE. THE ACTUAL ENDS MAY BE ADJUSTED IN FIELD BY ENGINEER TO COMPLETELY PROTECT THE SHORE LINE.
 2. LOCATIONS OF PERMANENT WARNING SIGNS MAY BE ADJUSTED IN THE FIELD BY ENGINEER.
 3. SEE SHEET 7 FOR ADDITIONAL ROCK DIKE ALIGNMENT INFORMATION.

<table border="1"> <thead> <tr> <th>REV.</th> <th>DATE</th> <th>DESCRIPTION</th> <th>BY</th> </tr> </thead> <tbody> <tr><td> </td><td> </td><td> </td><td> </td></tr> <tr><td> </td><td> </td><td> </td><td> </td></tr> <tr><td> </td><td> </td><td> </td><td> </td></tr> </tbody> </table>	REV.	DATE	DESCRIPTION	BY													 Stanley Consultants Inc. 225 Iowa Avenue, Muscatine, Iowa 52761-3764 www.stanleyconsultants.com	COASTAL PROTECTION AND RESTORATION AUTHORITY OPERATIONS DIVISION 450 LAUREL STREET, SUITE 1200 BATON ROUGE, LOUISIANA 70801	GIWW TO CLOVELLY HYDROLOGIC RESTORATION 2015 MAINTENANCE PROJECT	ACCESS DREDGE A
	REV.	DATE	DESCRIPTION	BY																
STATE PROJECT NUMBER: BA-02																				
FEDERAL PROJECT NUMBER: BA-02																				
APPROVED BY: JRS																				
DATE: JUNE 2015	SHEET 6 OF 18																			



LEGEND

- EXISTING MARSH BANK
- EXISTING SURFACE CONTOURS
- ROCK DIKE CONTOURS
- ROCK DIKE ALIGNMENT
- SECTION LINES
- POWER LINES
- SURVEYED POWER POLE
- 20 FT VERTICAL AND HORIZONTAL CLEARANCE
- 50 FT ENERGY POWER LINE RIGHT OF WAY
- LIMITS OF CONSTRUCTION
- PERMANENT WARNING SIGNS
- TEMPORARY WARNING SIGNS
- PROPOSED ACCESS CHANNEL
- TEMPORARY SPOIL LOCATION
- WOODEN CRANE MATS (NO DIRECT PAY)

ROCK DIKE 1 POINT TABLE (CON'T)

POINT	STATION	NORTHING	EASTING
H	107+59.29	369745.49	3630871.41
I	108+85.28	369864.16	3630829.09
J	110+47.22	370022.17	3630864.54
K	113+00.81	370266.97	3630798.35
L	117+30.85	370696.50	3630777.23

PLAN VIEW B
SCALE: 1" = 100' (11" X 17")

- NOTES:**
- THE END COORDINATES OF THE PROPOSED ROCK DIKES ARE APPROXIMATE. THE ACTUAL ENDS MAY BE ADJUSTED IN FIELD TO COMPLETELY PROTECT THE SHORE LINE.
 - LOCATIONS OF PERMANENT WARNING SIGNS MAY BE ADJUSTED IN THE FIELD BY ENGINEER.

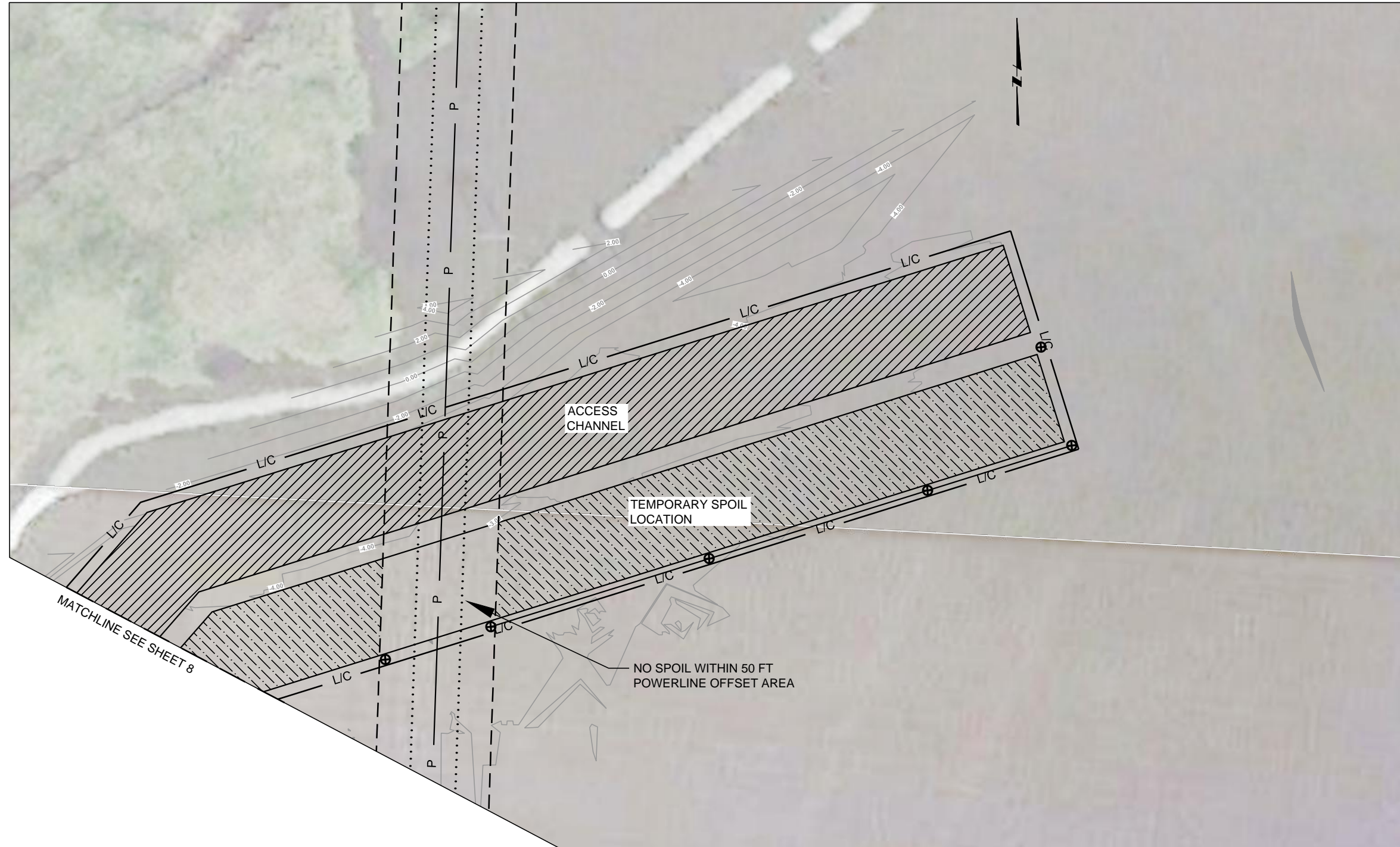
REV.	DATE	DESCRIPTION	BY



COASTAL PROTECTION AND RESTORATION AUTHORITY
OPERATIONS DIVISION
 450 LAUREL STREET, SUITE 1200
 BATON ROUGE, LOUISIANA 70801
 DRAWN BY: SRH DESIGNED BY: SRH

GIWW TO CLOVELLY HYDROLOGIC RESTORATION
 2015 MAINTENANCE PROJECT
 STATE PROJECT NUMBER: BA-02
 FEDERAL PROJECT NUMBER: BA-02
 APPROVED BY: JRS

PLAN VIEW B
 107+00 TO 117+31
 DATE: JUNE 2015
 SHEET 8 OF 18



LEGEND	
	EXISTING MARSH BANK
	EXISTING SURFACE CONTOURS
	ROCK DIKE CONTOURS
	ROCK DIKE ALIGNMENT
	SECTION LINES
	POWER LINES
	SURVEYED POWER POLE
	20 FT VERTICAL AND HORIZONTAL CLEARANCE
	50 FT ENERGY POWER LINE RIGHT OF WAY
	LIMITS OF CONSTRUCTION
	PERMANENT WARNING SIGNS
	TEMPORARY WARNING SIGNS
	PROPOSED ACCESS CHANNEL
	TEMPORARY SPOIL LOCATION
	WOODEN CRANE MATS (NO DIRECT PAY)

ROCK DIKE 1 POINT TABLE (CON'T)			
POINT	STATION	NORTHING	EASTING
H	107+59.29	369745.49	3630871.41
I	108+85.28	369864.16	3630829.09
J	110+47.22	370022.17	3630864.54
K	113+00.81	370266.97	3630798.35
L	117+30.85	370696.50	3630777.23

ACCESS DREDGE B
SCALE: 1"= 100' (11"X 17")

- NOTES:**
1. THE END COORDINATES OF THE PROPOSED ROCK DIKES ARE APPROXIMATE. THE ACTUAL ENDS MAY BE ADJUSTED IN FIELD TO COMPLETELY PROTECT THE SHORE LINE.
 2. LOCATIONS OF PERMANENT WARNING SIGNS MAY BE ADJUSTED IN THE FIELD BY ENGINEER.

REV.	DATE	DESCRIPTION	BY

Stanley Consultants Inc.
225 Iowa Avenue, Muscatine, Iowa 52761-3764
www.stanleyconsultants.com

COASTAL PROTECTION AND RESTORATION AUTHORITY
OPERATIONS DIVISION
450 LAUREL STREET, SUITE 1200
BATON ROUGE, LOUISIANA 70801

DRAWN BY: SRH DESIGNED BY: SRH

GIWW TO CLOVELLY HYDROLOGIC RESTORATION
2015 MAINTENANCE PROJECT

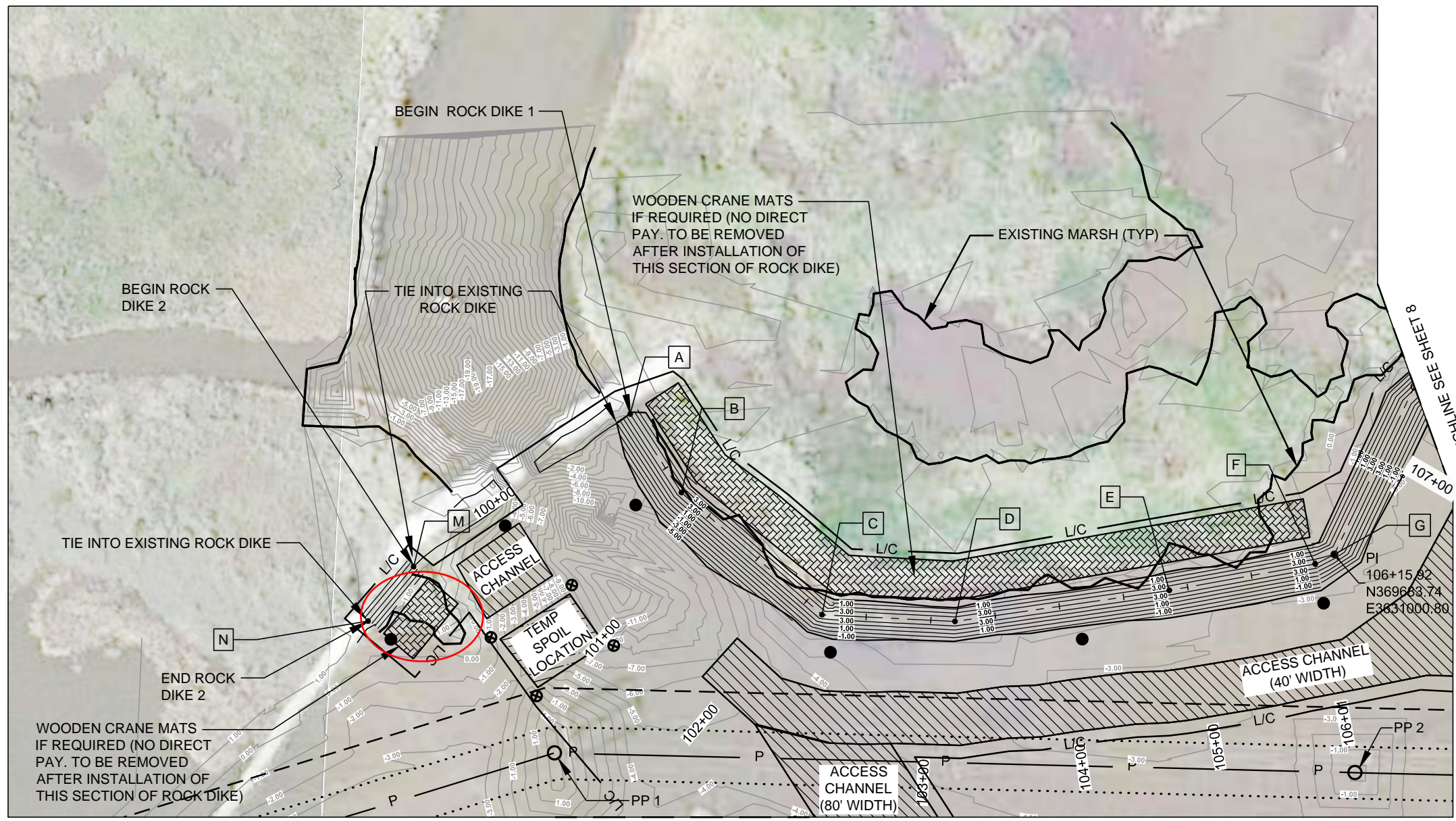
STATE PROJECT NUMBER: BA-02
FEDERAL PROJECT NUMBER: BA-02

APPROVED BY: JRS

ACCESS DREDGE B

DATE: JUNE 2015

SHEET 9 OF 18



LEGEND

- EXISTING MARSH BANK
- EXISTING SURFACE CONTOURS
- ROCK DIKE CONTOURS
- ROCK DIKE ALIGNMENT
- SECTION LINES
- POWER LINES
- SURVEYED POWER POLE
- 20 FT VERTICAL AND HORIZONTAL CLEARANCE
- 50 FT ENERGY POWER LINE RIGHT OF WAY
- LIMITS OF CONSTRUCTION
- PERMANENT WARNING SIGNS
- TEMPORARY WARNING SIGNS
- PROPOSED ACCESS CHANNEL
- TEMPORARY SPOIL LOCATION
- WOODEN CRANE MATS (NO DIRECT PAY)

ROCK DIKE 1 POINT TABLE

POINT	STATION	NORTHING	EASTING
A	100+00.00	369140.81	3630892.44
B	100+72.29	369180.21	3630953.04
C	102+15.98	369288.73	3631047.23
D	103+18.66	369391.28	3631052.42
E	104+85.62	369556.52	3631028.54
F	106+00.87	369669.91	3631007.92
G	106+15.92	369683.74	3631000.80

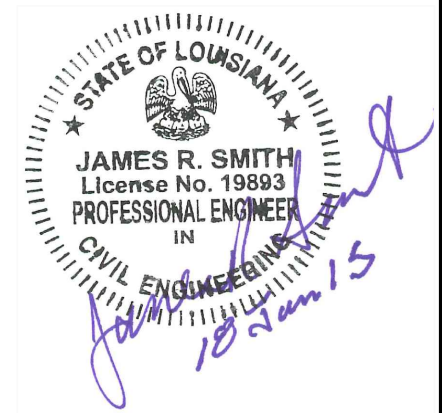
ROCK DIKE 2 POINT TABLE

POINT	STATION	NORTHING	EASTING
M	200+00.00	368973.86	3631009.82
N	200+54.79	368938.71	3631051.86

MATCHLINE SEE SHEET 6
PLAN VIEW A
 SCALE: 1"= 100' (11"X 17")

NOTES:

1. THE END COORDINATES OF THE PROPOSED ROCK DIKES ARE APPROXIMATE. THE ACTUAL ENDS MAY BE ADJUSTED IN FIELD BY ENGINEER TO COMPLETELY PROTECT THE SHORE LINE.
2. LOCATIONS OF PERMANENT WARNING SIGNS MAY BE ADJUSTED IN THE FIELD BY ENGINEER.
3. SEE SHEET 8 FOR ADDITIONAL ROCK DIKE ALIGNMENT INFORMATION.
4. THE CONTRACTOR MAY INSTALL THE DIKE FROM STATION 100+00 TO 106+00 USING EITHER THE ACCESS CHANNEL OR CRANE MATS AT HIS OPTION.
5. IF THE POWERLINE CANNOT BE DE-ENERGIZED BETWEEN STATIONS 106+00 AND 117+31 AND STATIONS 200+00 TO 200+55, THE CONTRACTOR SHALL INSTALL THE DIKE USING CRANE MATS.



REV.	DATE	DESCRIPTION	BY


Stanley Consultants Inc.
 225 Iowa Avenue, Muscatine, Iowa 52761-3764
 www.stanleyconsultants.com

**COASTAL PROTECTION AND RESTORATION AUTHORITY
 OPERATIONS DIVISION**
 450 LAUREL STREET, SUITE 1200
 BATON ROUGE, LOUISIANA 70801

DRAWN BY: SRH DESIGNED BY: SRH

GIWW TO CLOVELLY HYDROLOGIC RESTORATION
 2015 MAINTENANCE PROJECT

STATE PROJECT NUMBER: BA-02
 FEDERAL PROJECT NUMBER: BA-02

APPROVED BY: JRS

PLAN VIEW A
 100+00 TO 107+00 AND
 200+00 TO 200+55

DATE: NOVEMBER 2015
 SHEET 7 OF 18